

patagonia

229 MARTIN LUTHER KING JR. BLVD.
SAVANNAH, GEORGIA



CITY OF SAVANNAH CONSTRUCTION AND LIFE SAFETY CODES

INTERNATIONAL BUILDING CODE	2012 EDITION
INTERNATIONAL PLUMBING CODE	2012 EDITION
INTERNATIONAL FIRE CODE	2012 EDITION
INTERNATIONAL ENERGY CONSERVATION CODE	2019 EDITION
LIFE SAFETY CODE, NFPA 101	2012 EDITION
ADA STANDARDS FOR ACCESSIBLE DESIGN	2010 EDITION



Mattie Overmyer

Email: toverm20@student.scad.edu

Phone: 469.426.9090

Instagram: @mo.originaldesigns

Web: mattieovermyeroriginaldesigns.com

Studio III



229 Martin Luther King JR. BLVD
Savannah, GA



SHEET INDEX

A100	TITLE AND COVER PAGE
A101	FIRE AND LIFE SAFETY PLAN
A102	FLOOR PLAN
A103	BUILDING SECTIONS
A104	INTERIOR ELEVATIONS
A105	DETAIL DRAWING
A108	FINISH PLAN
A108.1	PARTIAL FINISH PLAN
A107	FURNITURE PLAN
A108	REFLECTED CEILING PLAN
A109	ELECTRICAL PLAN
A110	PERSPECTIVES
A110.1	PERSPECTIVES

SYMBOL LEGEND

	NORTH ARROW
	SECTION TAG
	GRID HEAD
	INTERIOR ELEVATION
	CALLOUT HEAD

PROJECT DESCRIPTION

THIS SITE WILL HOST PATAGONIA'S NEW HEADQUARTERS.

THE BUILDING WAS ORIGINALLY BUILT AS PART OF THE CENTRAL OF GEORGIA RAILROAD COMPLEX AND WAS COMPLETED IN 1887. IT CURRENTLY IS EICHBERG HALL, SAVANNAH COLLEGE OF ART AND DESIGN'S INTERIOR DESIGN AND ARCHITECTURE BUILDING. PATAGONIA'S NEW HEAD QUARTERS WILL BE LOCATED ON THE SECOND FLOOR. THE SITE IS THE IDEAL PLACE FOR PATAGONIA TO RELOCATE, DUE TO THE SURROUNDING NATURE AND EASY ACCESS TO MANY OUT DOOR ACTIVITIES.

ENCOURAGED TO BIKE TO WORK, THROUGH THE MLK ENTRANCE, THERE WILL BE BIKE RACKS FOR THE EMPLOYEES TO SAFELY STORE THEIR BIKES THROUGHOUT THE DAY.

PATAGONIA'S SAVANNAH HEADQUARTERS WILL INVENT A SPACE WHICH SPARKS INSPIRATION FOR THE USERS TO BECOME IMMERSSED IN THEIR EVERYDAY LIFE. THE USER'S WORK LIFE WILL COMPLEMENT THEIR VARIOUS PERSONAL ADVENTUROUS HOBBIES. BY EMBODYING A PLAYFUL FUNCTIONAL DESIGN WHILE INCORPORATING MOMENTS OF CONNECTION BETWEEN HUMAN AND NATURE, THIS SPACE WILL EMPHASIZE THE ORGANIC FORMS. THE INTERWOVEN ASPECTS OF NATURE, "WORK" AND THE OUTSIDE LIVES OF THE EMPLOYEES WILL ENHANCE THE HARMONIOUS SPACE.



BUILDING DATA

OCCUPANCY	137
OCCUPANCY CLASSIFICATION	BUSINESS
LEVEL 2 SQUARE FOOTAGE	13,800
YEAR BUILT	1887

ABBREVIATIONS

PT	Paint
WC	Wall Covering
FL	Flooring
CF	Ceiling Finish



Title and Cover Page

Project number Studio III

Date February 6, 2019

Drawn by Mattie Overmyer

Checked by Alba Marcon

A100

Scale Not Applicable

OCCUPANCY TYPE: B

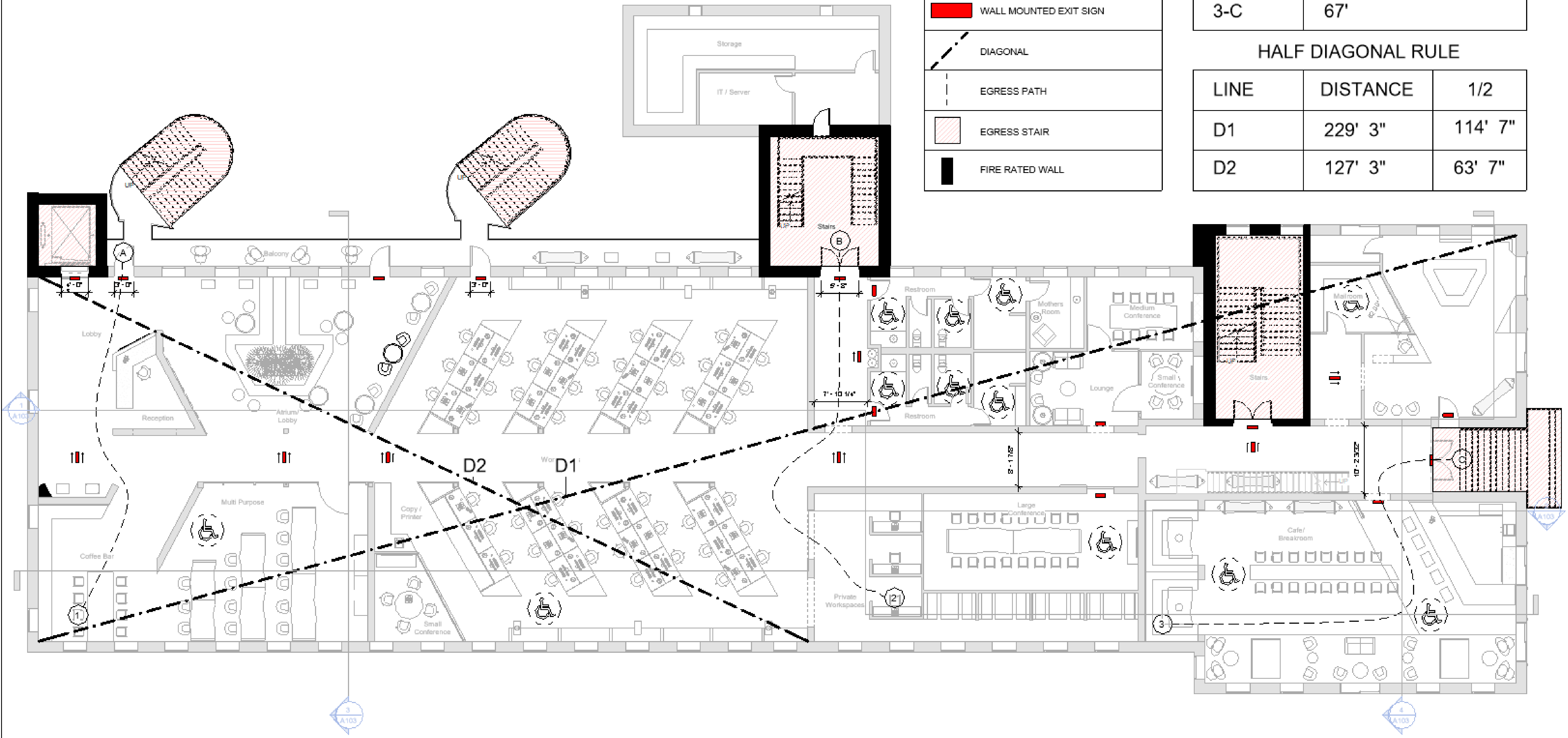
LEGEND	
	DOUBLE SIDED DIRECTIONAL EXIT SIGN
	DIRECTIONAL EXIT SIGN
	WALL MOUNTED EXIT SIGN
	DIAGONAL
	EGRESS PATH
	EGRESS STAIR
	FIRE RATED WALL

LIFE SAFETY DATA

PATH	TRAVEL DISTANCE
1-A	54'
2-B	63'
3-C	67'

HALF DIAGONAL RULE

LINE	DISTANCE	1/2
D1	229' 3"	114' 7"
D2	127' 3"	63' 7"



Mattie Overmyer

Email: tovern20@student.scad.edu

Phone: 489.428.8090

Instagram: @mo.originaldesigns

Web: mattieovermyeroriginaldesigns.com

Studio III



229 Martin Luther King JR. BLVD
Savannah, GA

Fire and Life Safety Plan

Project number Studio III

Date February 6, 2019

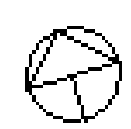
Drawn by Mattie Overmyer

Checked by Alba Marcon

A101

Scale 1/8" = 1'-0"

1 Fire and Life safety plan
1/8" = 1'-0"



3/5/2019 10:00:00 AM



Mattie Overmyer

Email: tovern20@student.scad.edu

Phone: 469.426.8090

Instagram: @mo.originaldesigns

Web: mattieovermyeroriginaldesigns.com

Studio III



229 Martin Luther King JR. BLVD
Savannah, GA

Floor Plan

Project number Studio III

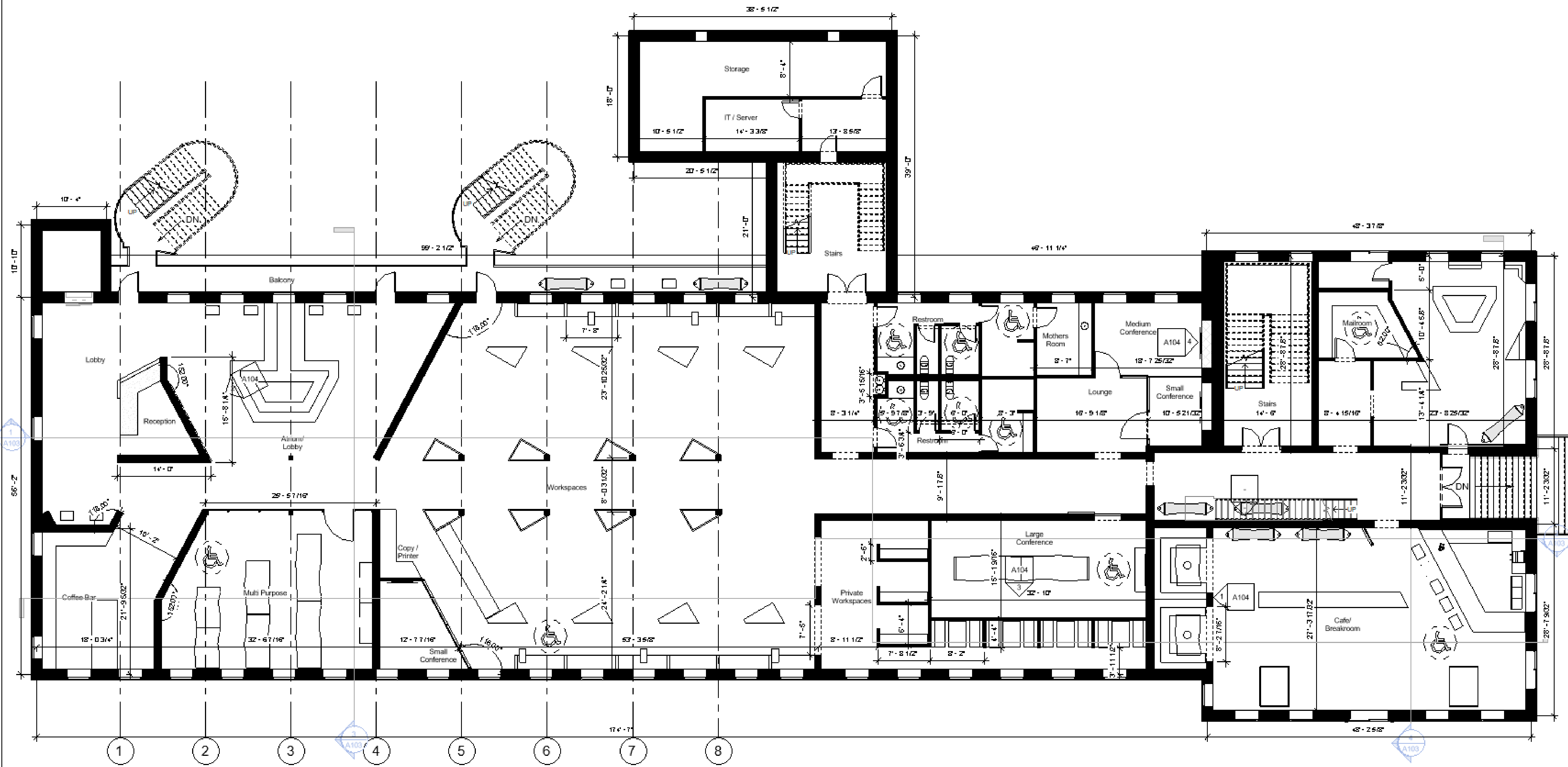
Date February 8, 2019

Drawn by Mattie Overmyer

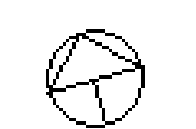
Checked by Professor Alba

A102

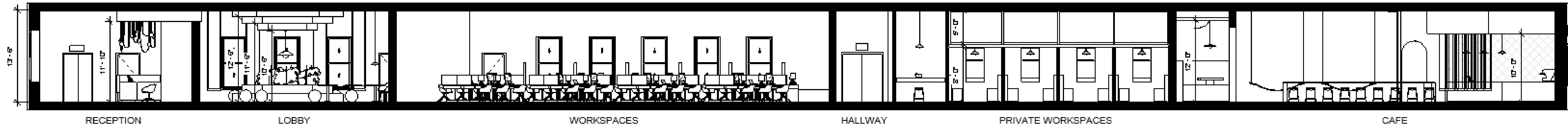
Scale 1/8" = 1'-0"



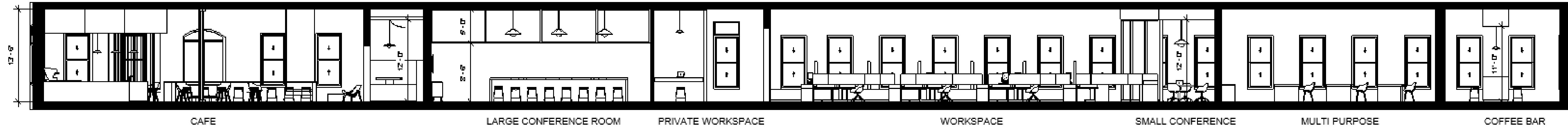
1 Floor Plan
1/8" = 1'-0"



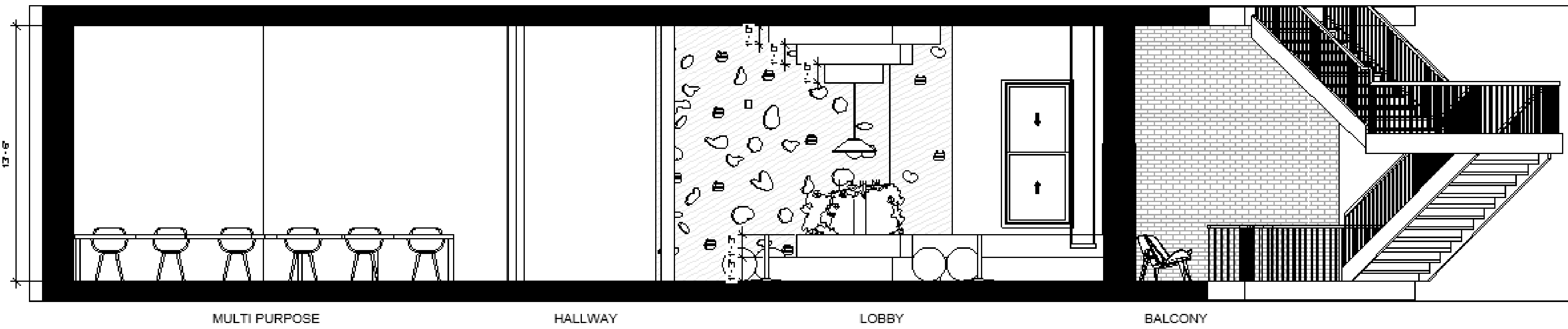
3/6/2019 12:21:04 AM



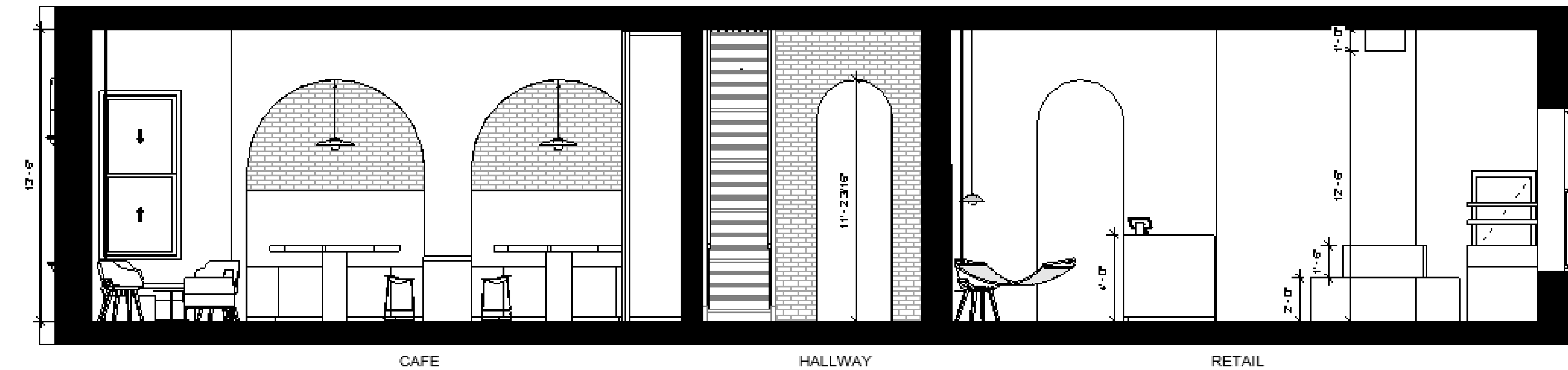
① Longitudinal Section 1
1/8" = 1'-0"



② Longitudinal Section 2
1/8" = 1'-0"



③ Transverse Section 1
1/4" = 1'-0"



④ Transverse Section 2
1/4" = 1'-0"



Mattie Overmyer

Email: tovern20@student.scad.edu

Phone: 469.426.9090

Instagram: @mo.originaldesigns

Web: mattieovermyeroriginaldesigns.com

Studio III

patagonia

229 Martin Luther King JR. BLVD
Savannah, GA

Building Sections

Project number Studio III

Date February 8, 2019

Drawn by Mattie Overmyer

Checked by Alba Maroon

A103

Scale As indicated



Mattie Overmyer

Email: toverm20@student.scd.edu

Phone: 489.426.9000

Instagram: @mo.originaldesigns

Web: mattieovermyeroriginaldesigns.com

Studio III



229 Martin Luther King JR. BLVD
Savannah, GA

Interior Elevations

Project number Studio III

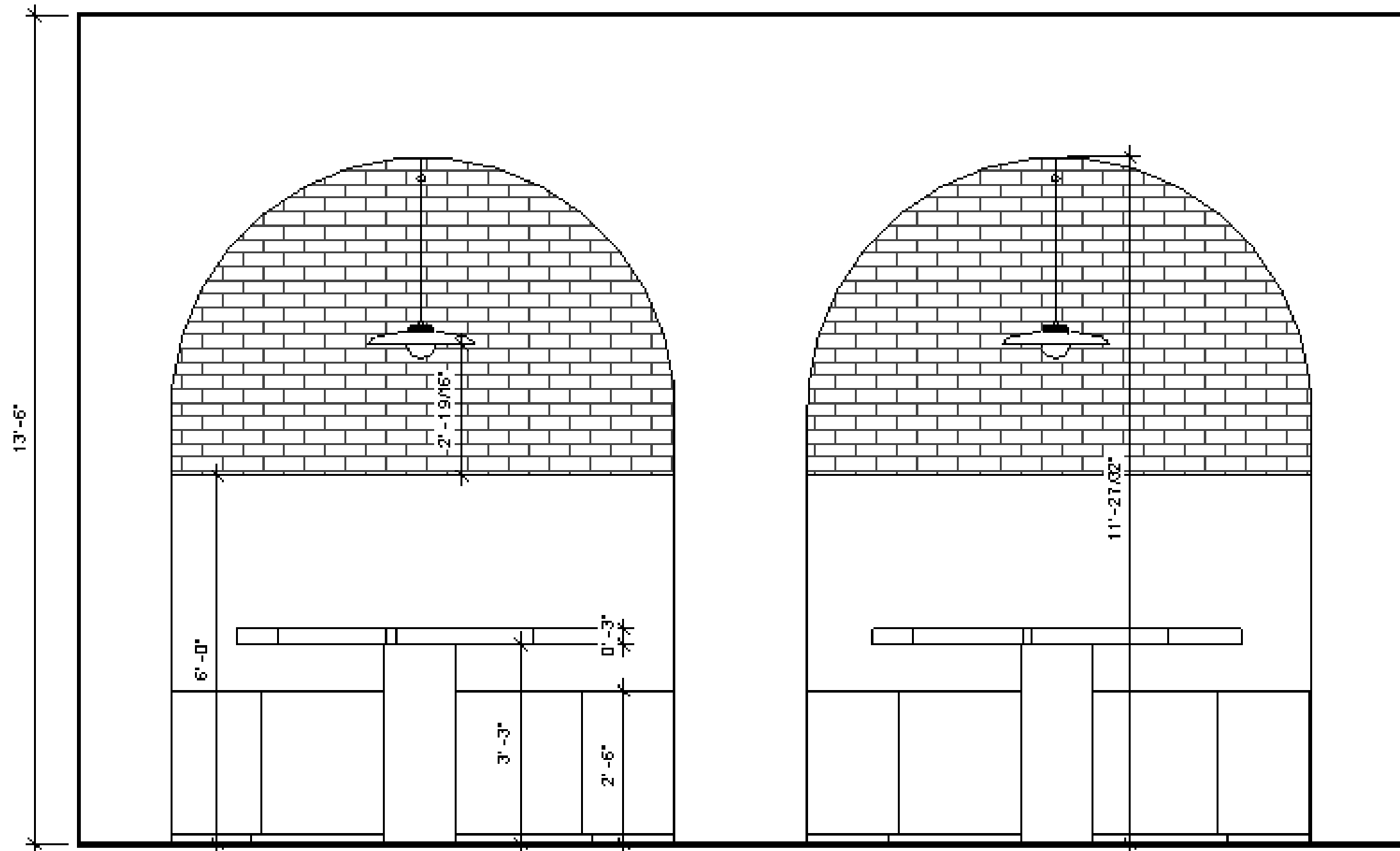
Date February 6, 2019

Drawn by Mattie Overmyer

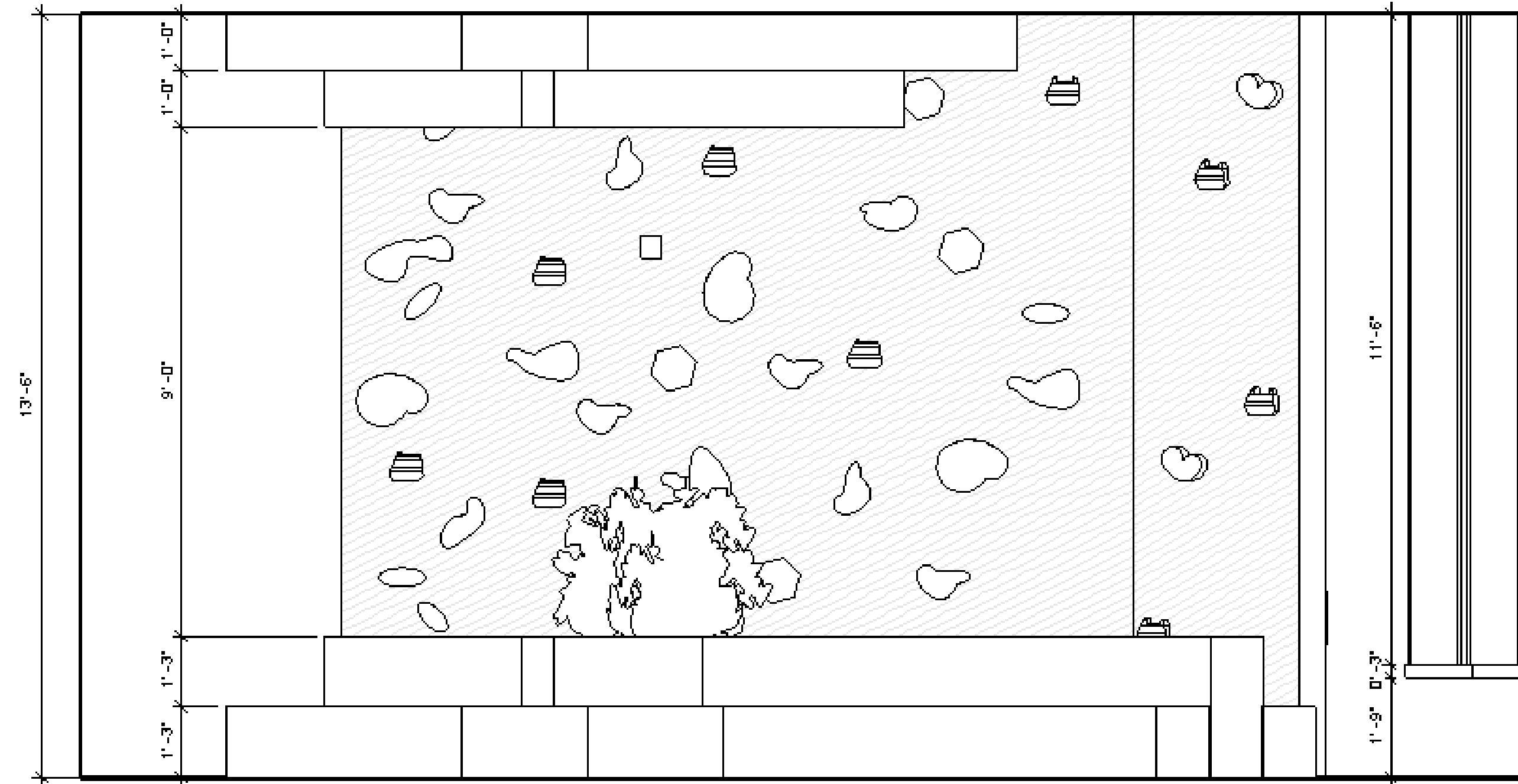
Checked by Alba Marcon

A104

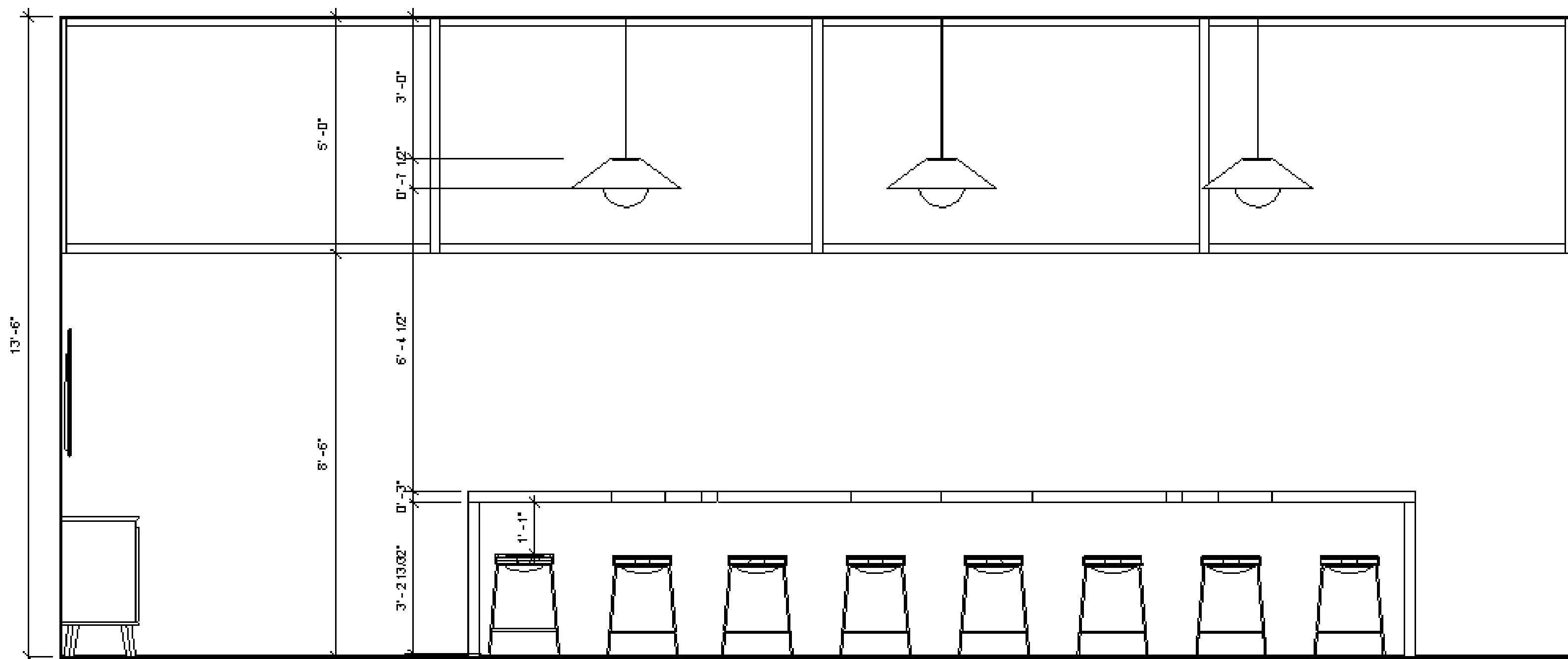
Scale 1/2" = 1'-0"



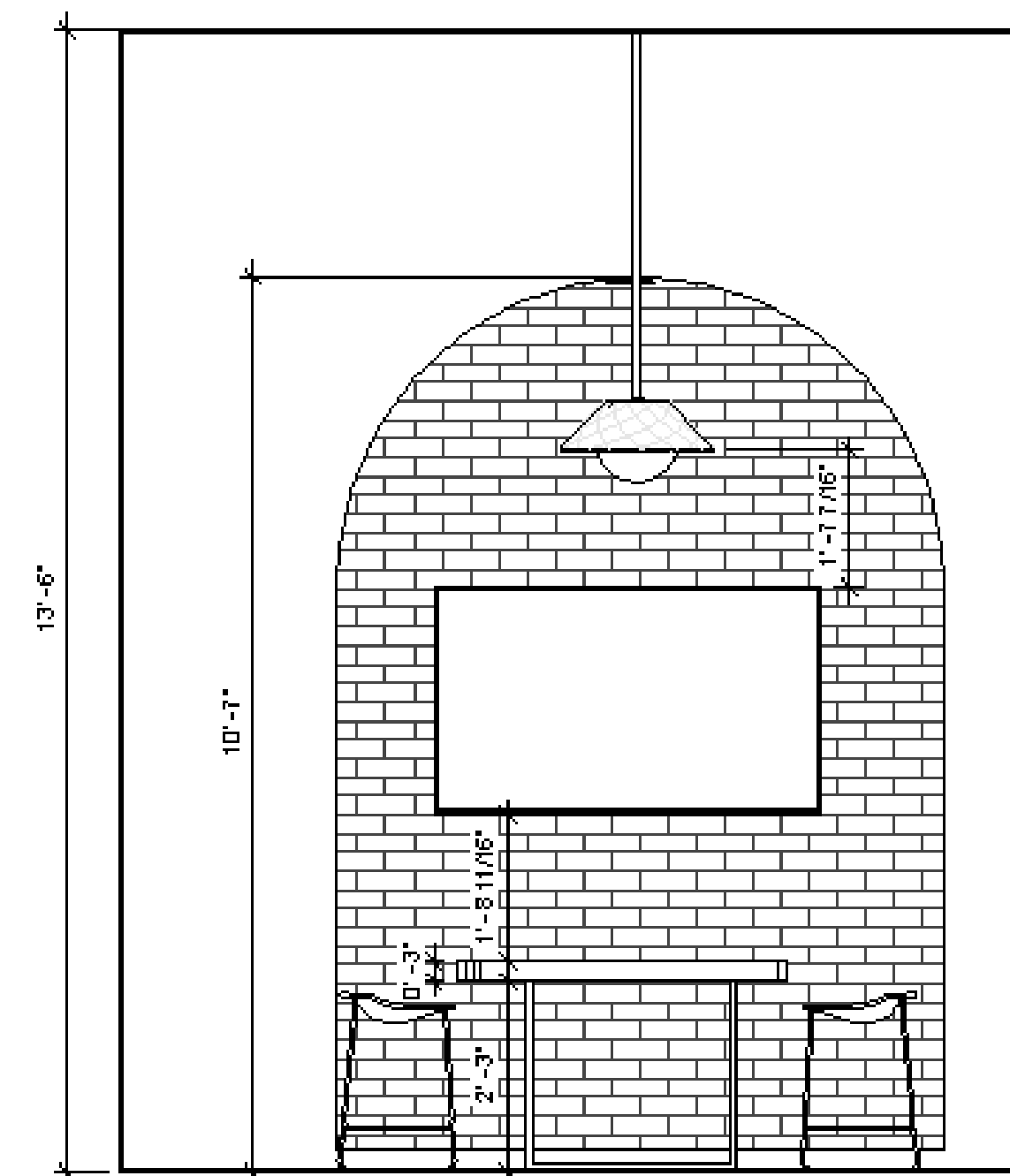
1 Cafe Booth Seating Elevation
1/2" = 1'-0"



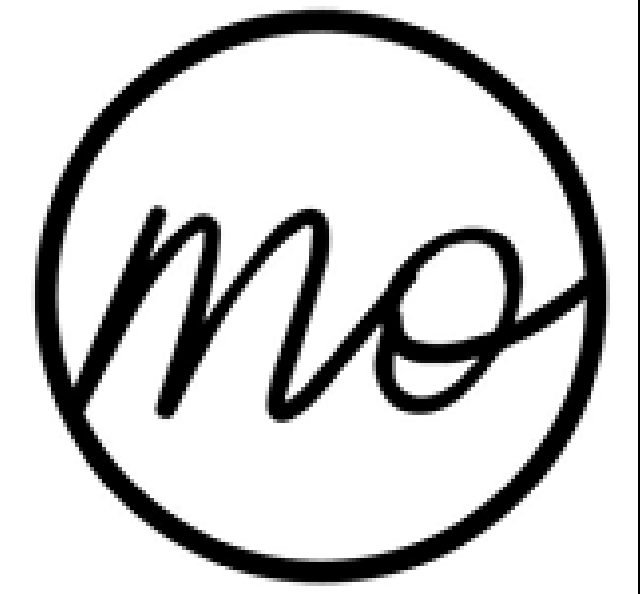
2 Lobby Elevation
1/2" = 1'-0"



3 Large Conference Elevation
1/2" = 1'-0"



4 Medium Conference Elevation
1/2" = 1'-0"



Mattie Overmyer

Email: toverm20@student.scad.edu

Phone: 469.426.9090

Instagram: @mo.originaldesigns

Web: mattieovermyeroriginaldesigns.com

Studio III

patagonia

229 Martin Luther King JR. BLVD
Savannah, GA

Detail Drawing

Project number Studio III

Date February 6, 2019

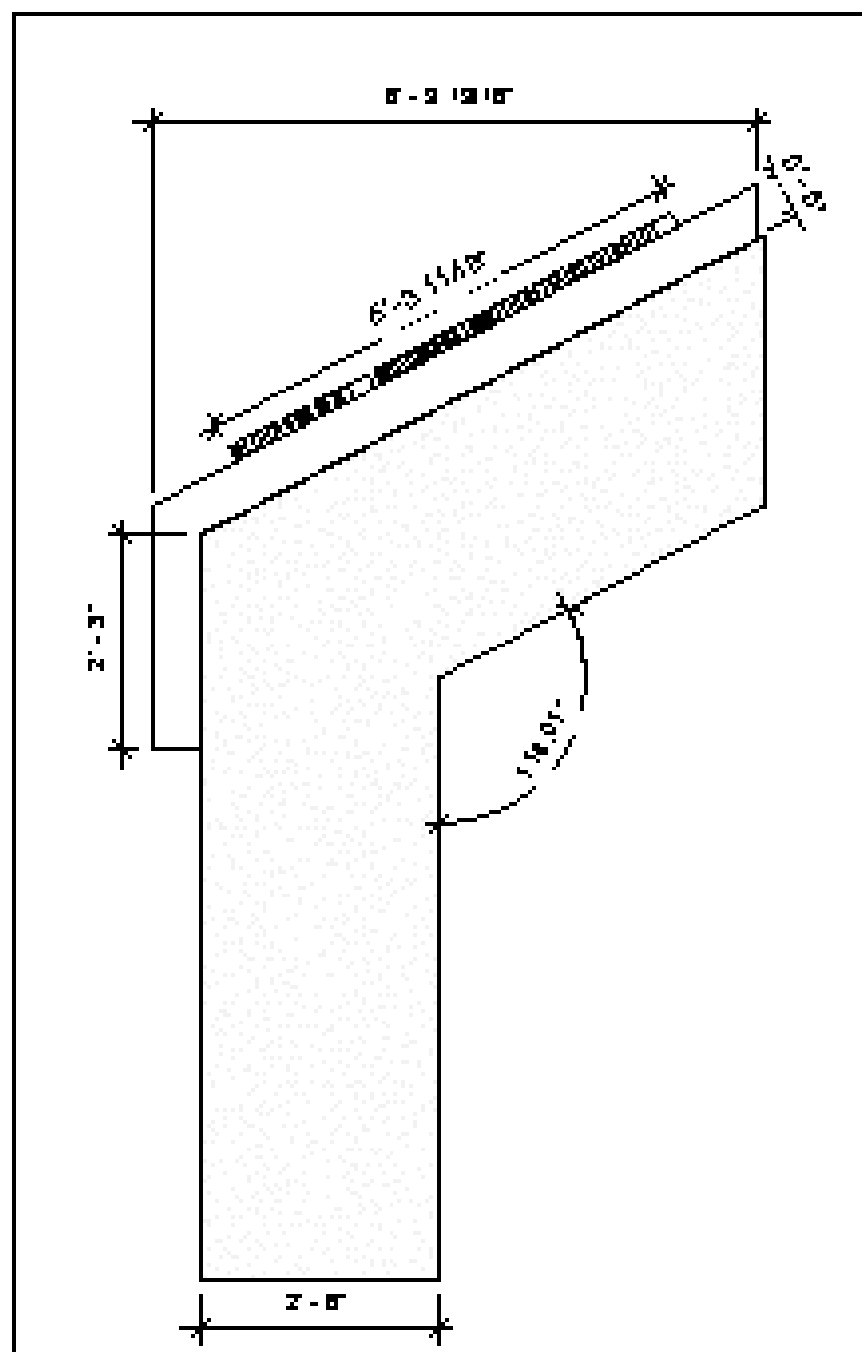
Drawn by Mattie Overmyer

Checked by Alba Marcon

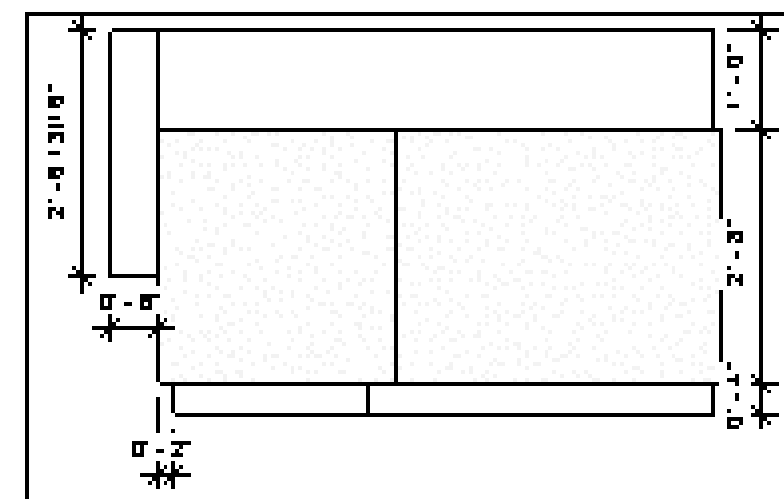
A105

Scale 1/2" = 1'-0"

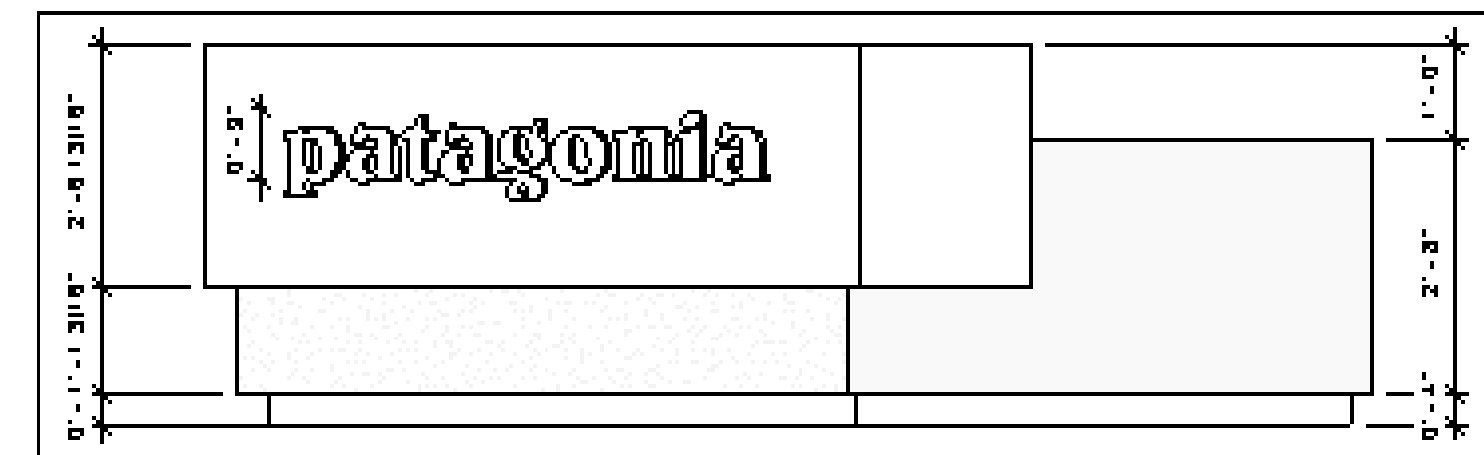
3/8x20 x 1/8 x 24.00



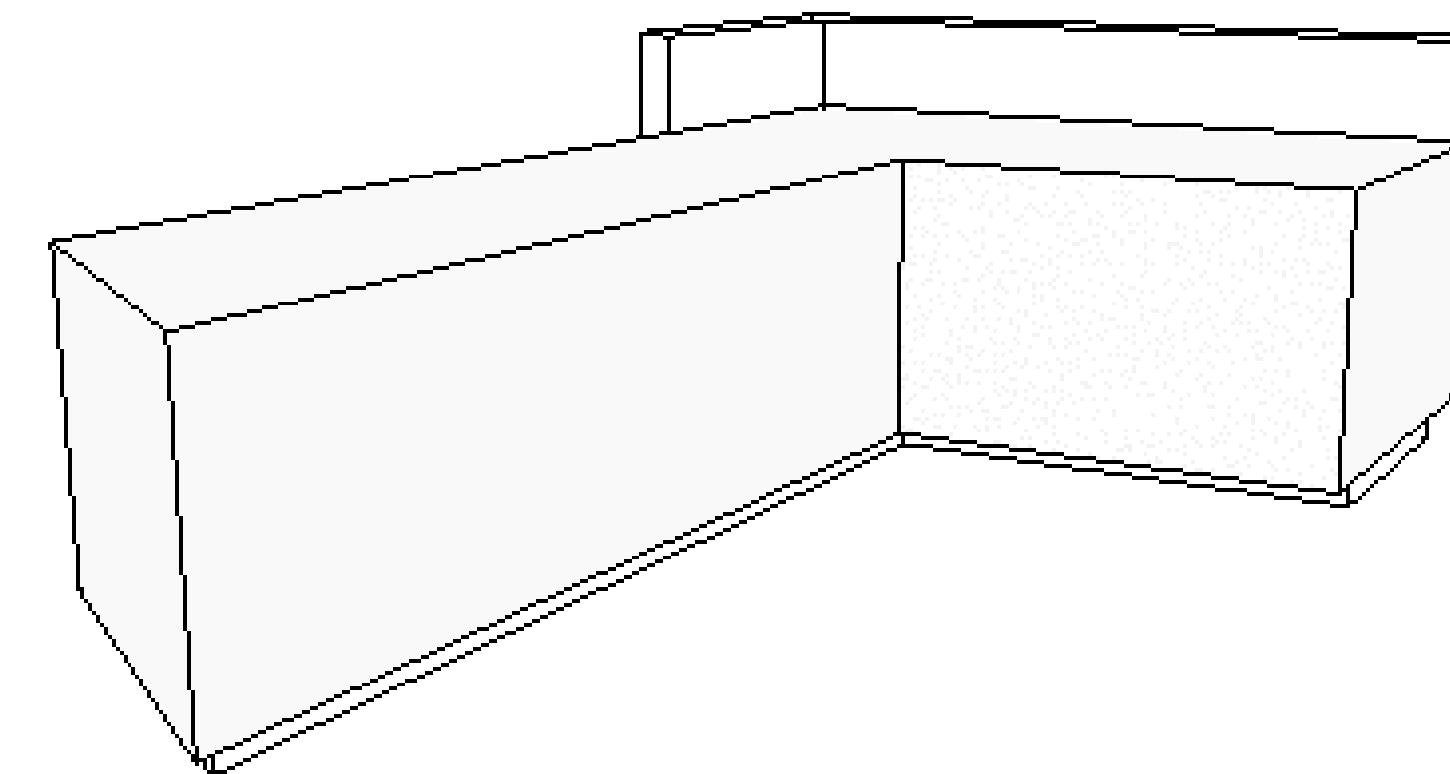
1 Reception Desk Plan
1/2" = 1'-0"



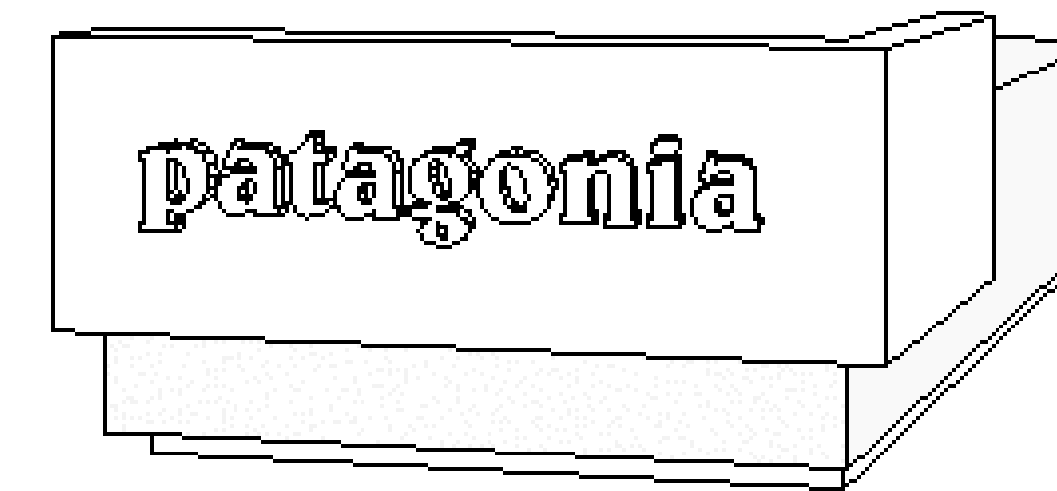
2 Reception Desk Section Side
1/2" = 1'-0"



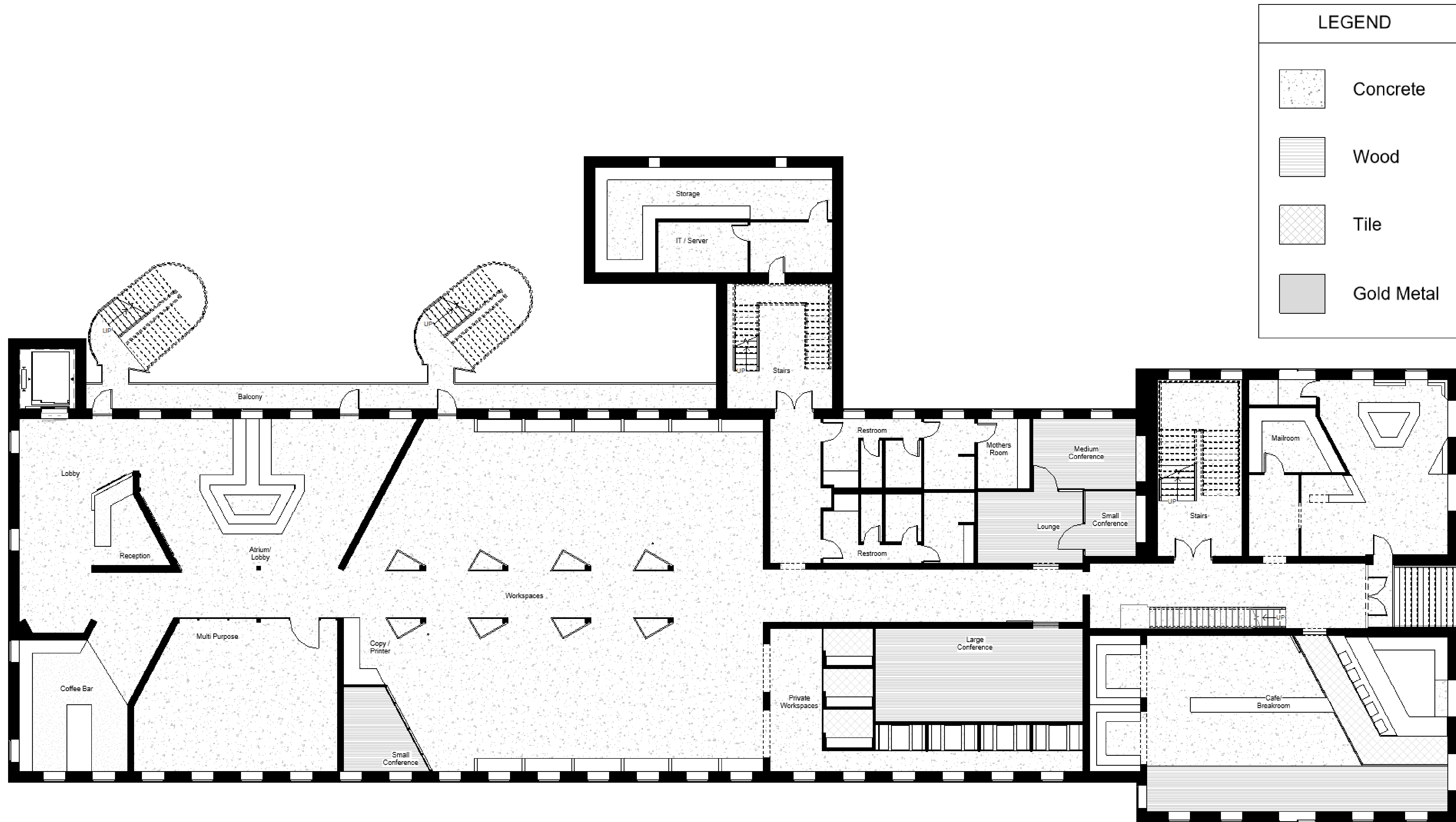
3 Reception Desk Section
1/2" = 1'-0"



4 3D View Reception Back



5 3D View Reception



LEGEND	
	Concrete
	Wood
	Tile
	Gold Metal



Mattie Overmyer
 Email: toverm20@student.scad.edu
 Phone: 469.426.9090
 Instagram: @mo.originaldesigns
 Web: mattieovermyeroriginaldesigns.com

Studio III

patagonia
 229 Martin Luther King JR. BLVD
 Savannah, GA

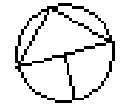
Finish Plan

Project number: Studio III
 Date: February 6, 2019
 Drawn by: Mattie Overmyer
 Checked by: Alba Marcon

A106

Scale: 1/8" = 1'-0"

① Finish Plan
 1/8" = 1'-0"





Mattie Overmyer

Email: toverm20@student.scad.edu

Phone: 469.426.9090

Instagram: @mo.originaldesigns

Web: mattieovermyeroriginaldesigns.com

Studio III

patagonia

229 Martin Luther King JR. BLVD
Savannah, GA

Partial Finish Plan

Project number Studio III

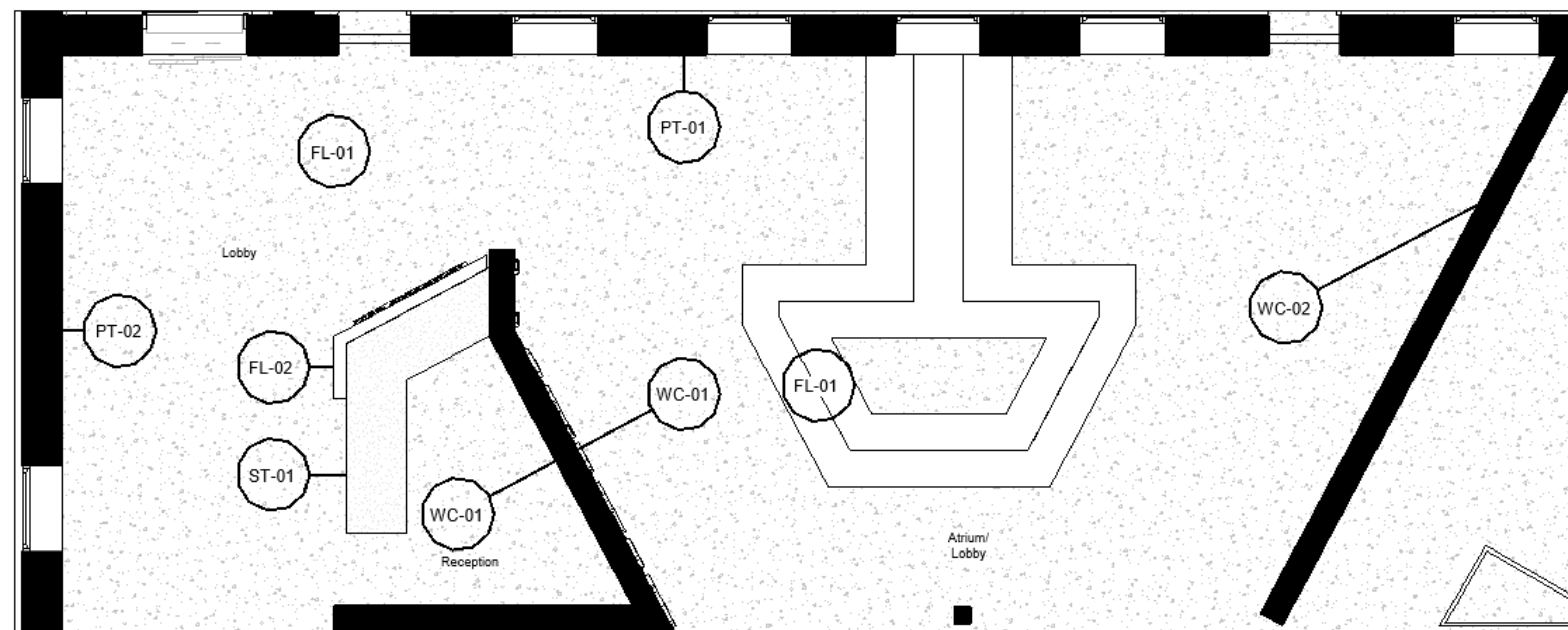
Date February 6, 2019

Drawn by Author

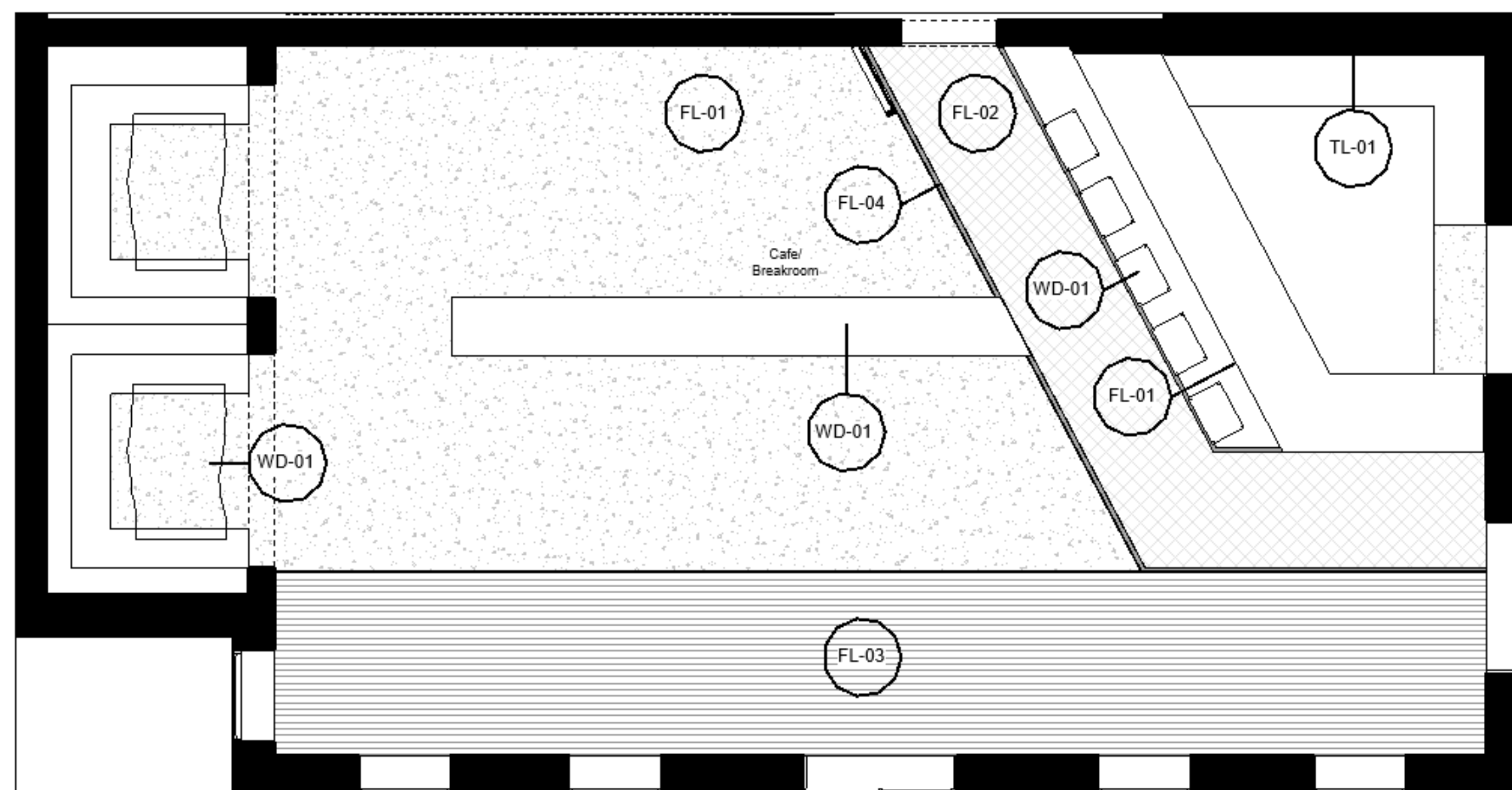
Checked by Checker

A106.1

Scale 1/4" = 1'-0"



① Finish Plan Lobby
1/4" = 1'-0"



② Finish Plan Cafe
1/4" = 1'-0"





Mattie Overmyer

Email: toverm20@student.scad.edu

Phone: 469.426.9090

Instagram: @mo.originaldesigns

Web: mattieovermyeroriginaldesigns.com

Studio III



229 Martin Luther King JR. BLVD
Savannah, GA

Partial Finish plan

Project number Studio III

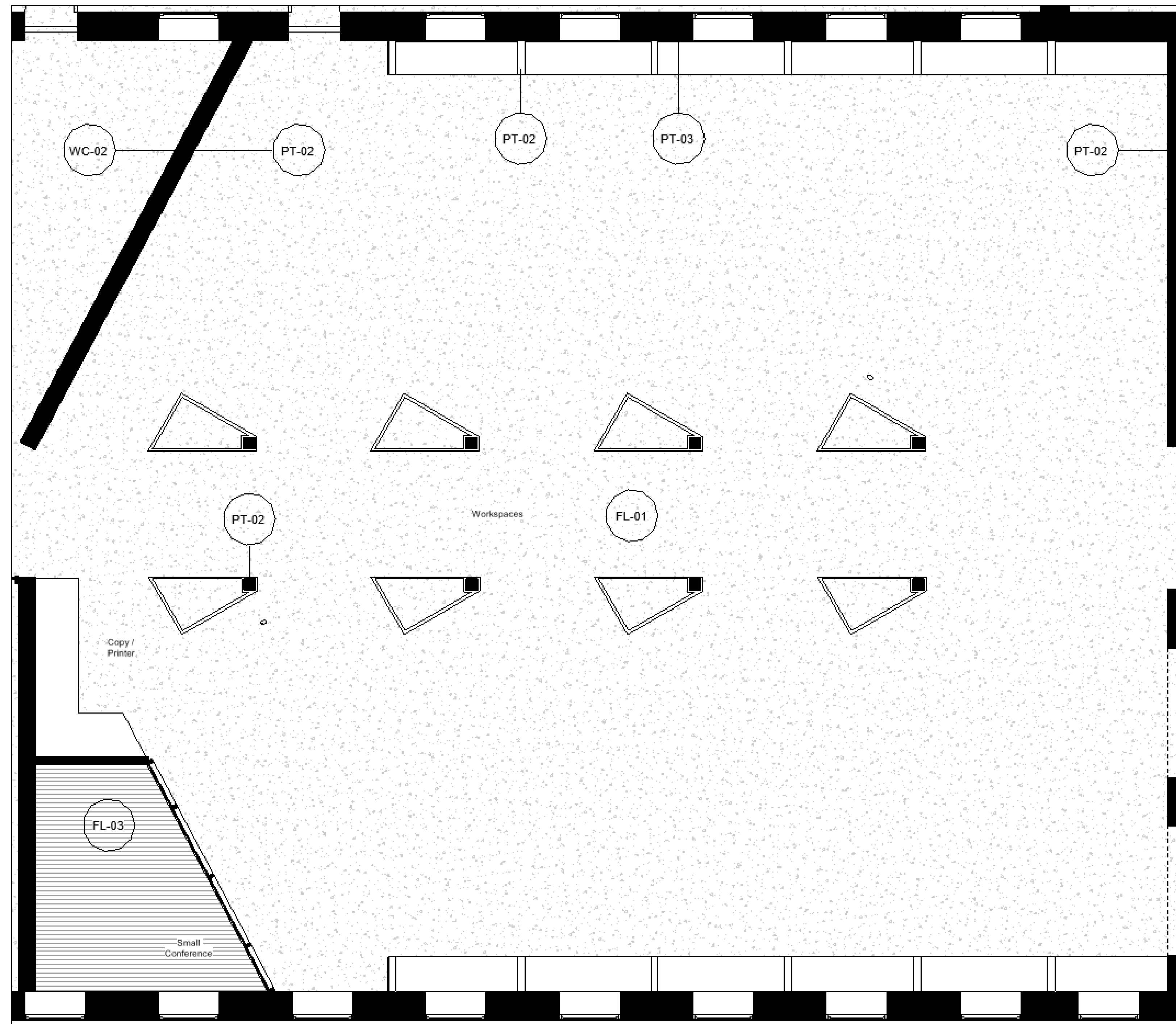
Date February 6, 2019

Drawn by Author

Checked by Checker

A106.2

Scale 1/4" = 1'-0"



① Finish Plan Workspaces
1/4" = 1'-0"





Mattie Overmyer

Email: toverm20@student.scad.edu

Phone: 469.428.9090

Instagram: @mo.originaldesigns

Web: mattieovermyeroriginaldesigns.com

Studio III

patagonia

229 Martin Luther King JR. BLVD
Savannah, GA

Furniture Plan

Project number Studio III

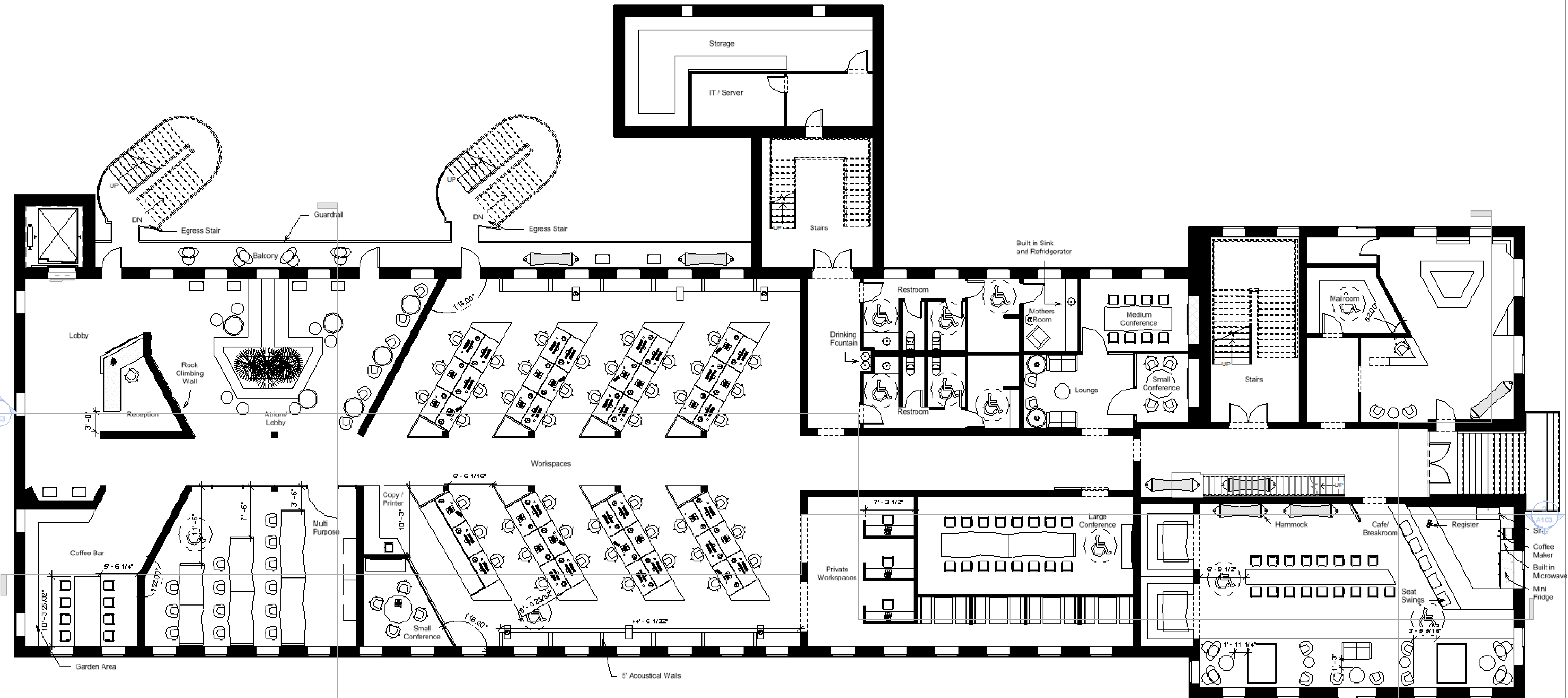
Date February 6, 2019

Drawn by Mattie Overmyer

Checked by Professor Alba

A107

Scale 1/8" = 1'-0"



1 Furniture Plan
1/8" = 1'-0"



3/26/2019 5:45:38 AM



Mattie Overmyer

Email: tovern20@student.soad.edu

Phone: 489.426.9090

Instagram: @mo.originaldesigns

Web: mattieovermyeroriginaldesigns.com

Studio III



229 Martin Luther King JR. BLVD
Savannah, GA

Reflected Ceiling Plan

Project number Studio III

Date February 6, 2019

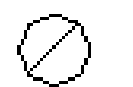

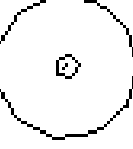

Drawn by Mattie Overmyer

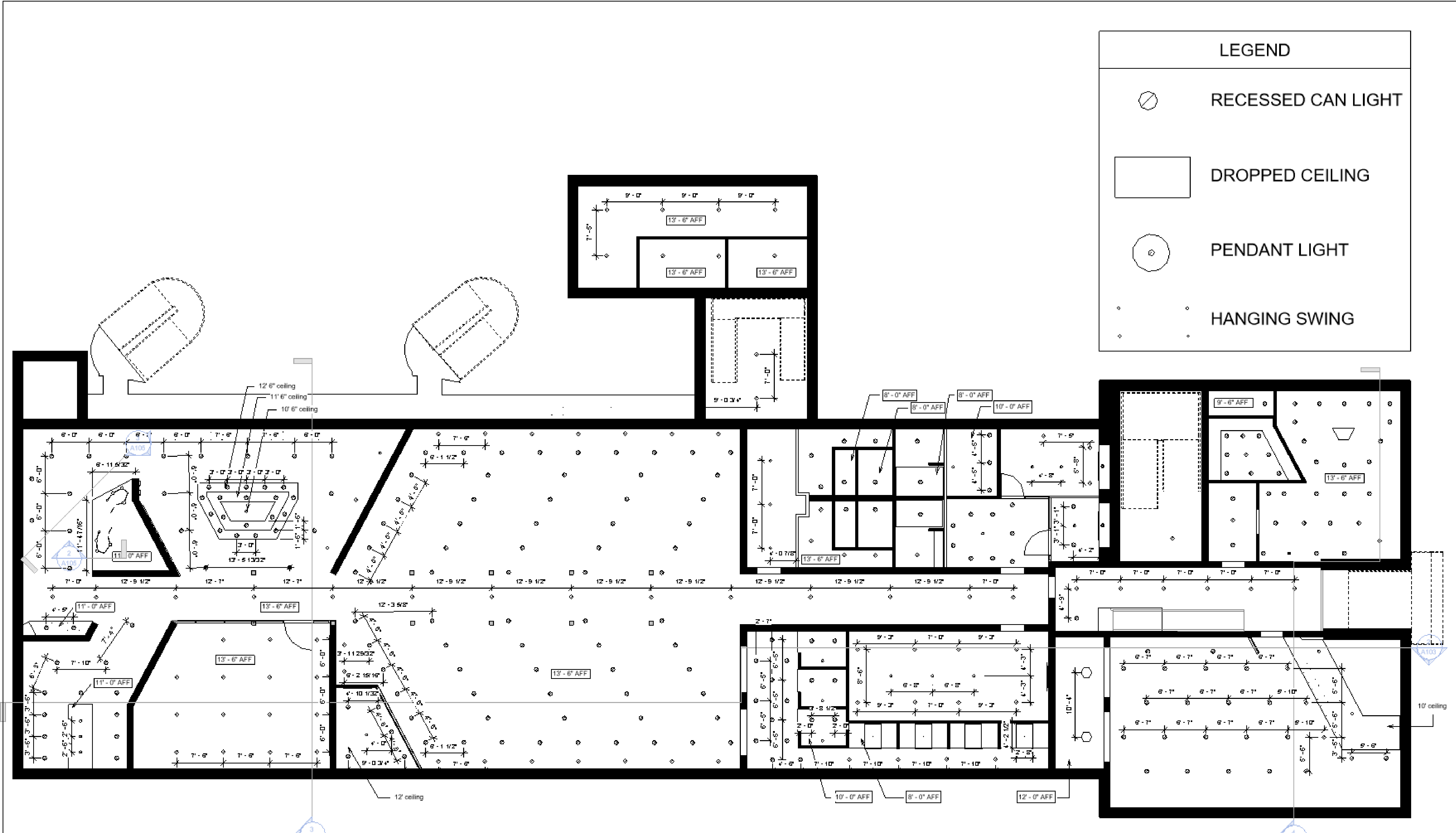
Checked by Professor Alba

A108

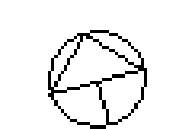
Scale 1/8" = 1'-0"

LEGEND

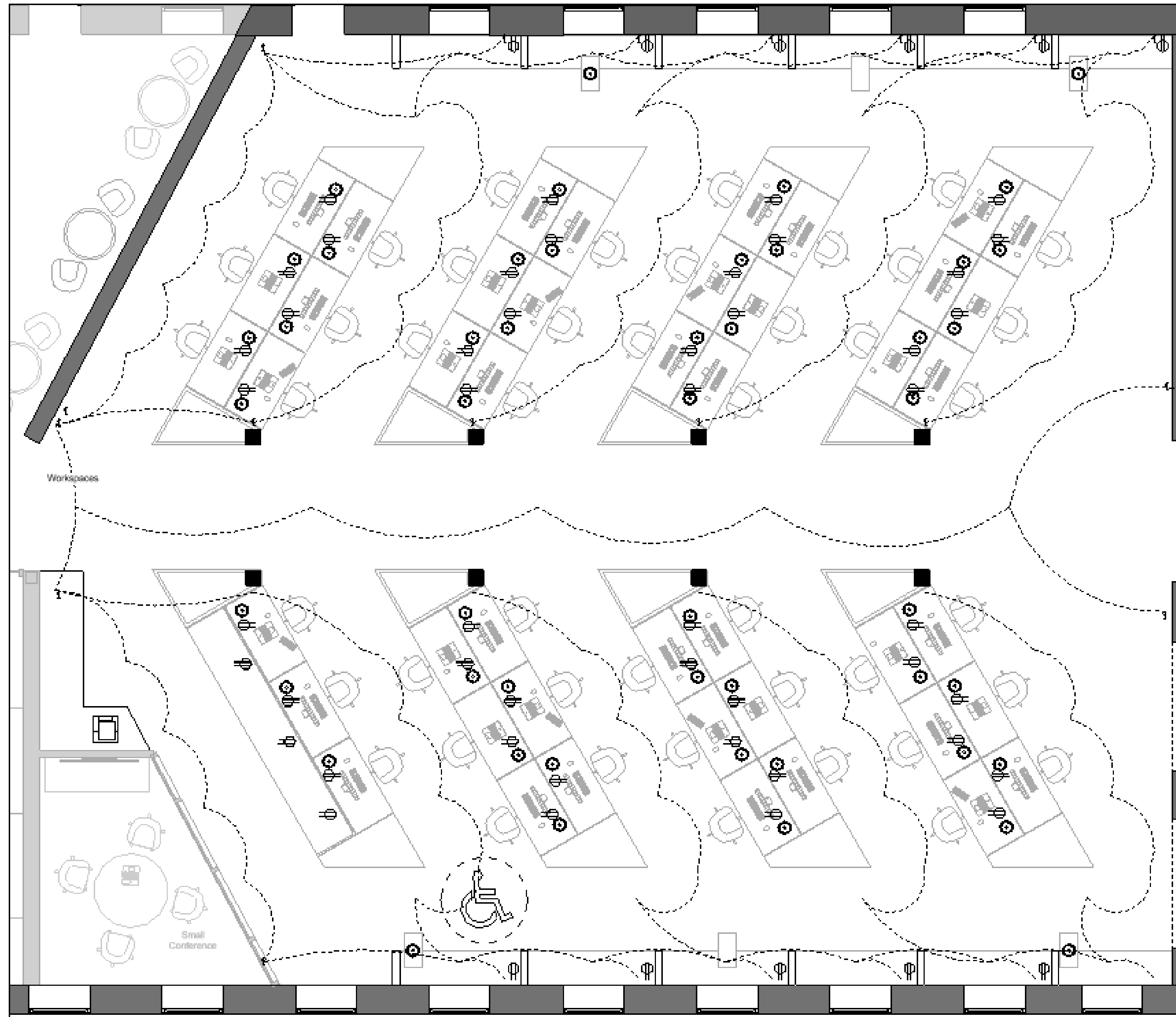
-  RECESSED CAN LIGHT
-  DROPPED CEILING
-  PENDANT LIGHT
-  HANGING SWING



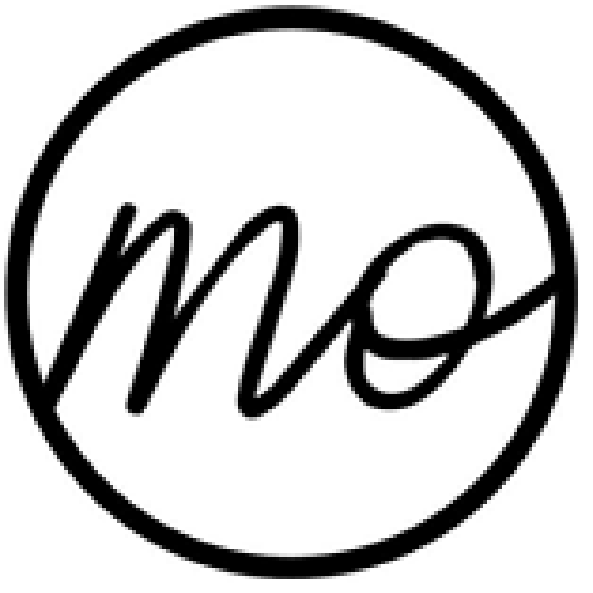
Level 2
1/8" = 1'-0"



3/6/2019 9:55:32 AM



① Power Communication Plan
1/4" = 1'-0"



Mattie Overmyer

Email: toverm20@student.scad.edu

Phone: 409.426.9090

Instagram: @mo.originaldesigns

Web: mattieovermyeroriginaldesigns.com

Studio III

patagonia

229 Martin Luther King JR. BLVD
Savannah, GA

Electrical / Power /
Communication
Plan

Project number Studio III

Date February 6, 2018

Drawn by Mattie Overmyer

Checked by Alba Marcon

A109

Scale 1/4" = 1'-0"





Mattie Overmyer

Email: tovern20@student.scad.edu

Phone: 469.426.9090

Instagram: @mo.originaldesigns

Web: mattieovermyeroriginaldesigns.com

Studio III

patagonia

229 Martin Luther King JR. BLVD
Savannah, GA

Perspectives

Project number Studio III

Date February 6, 2019

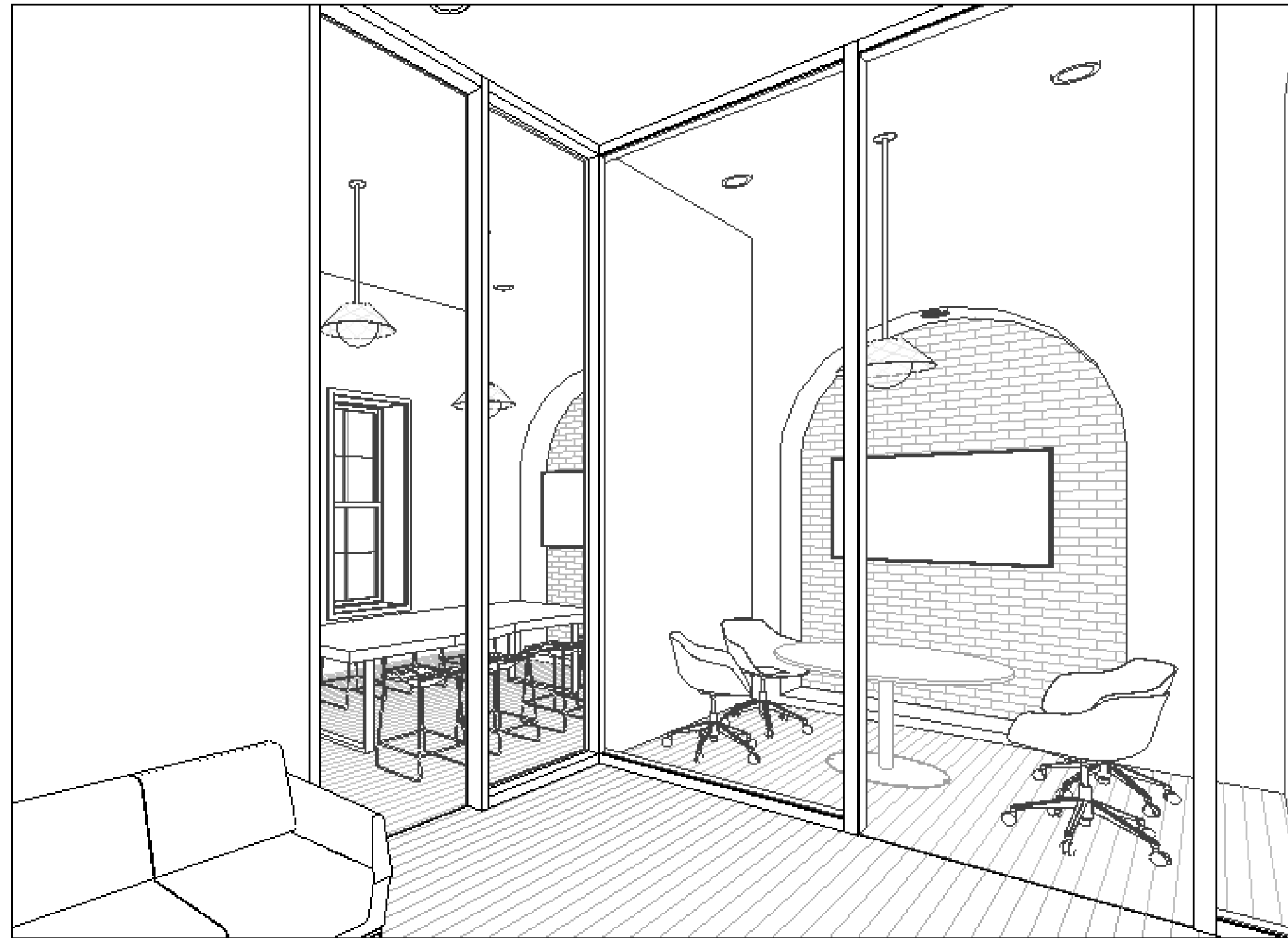
Drawn by Mattie Overmyer

Checked by Alba Marcon

A110

Scale

3/6/2019 7:50:07 AM



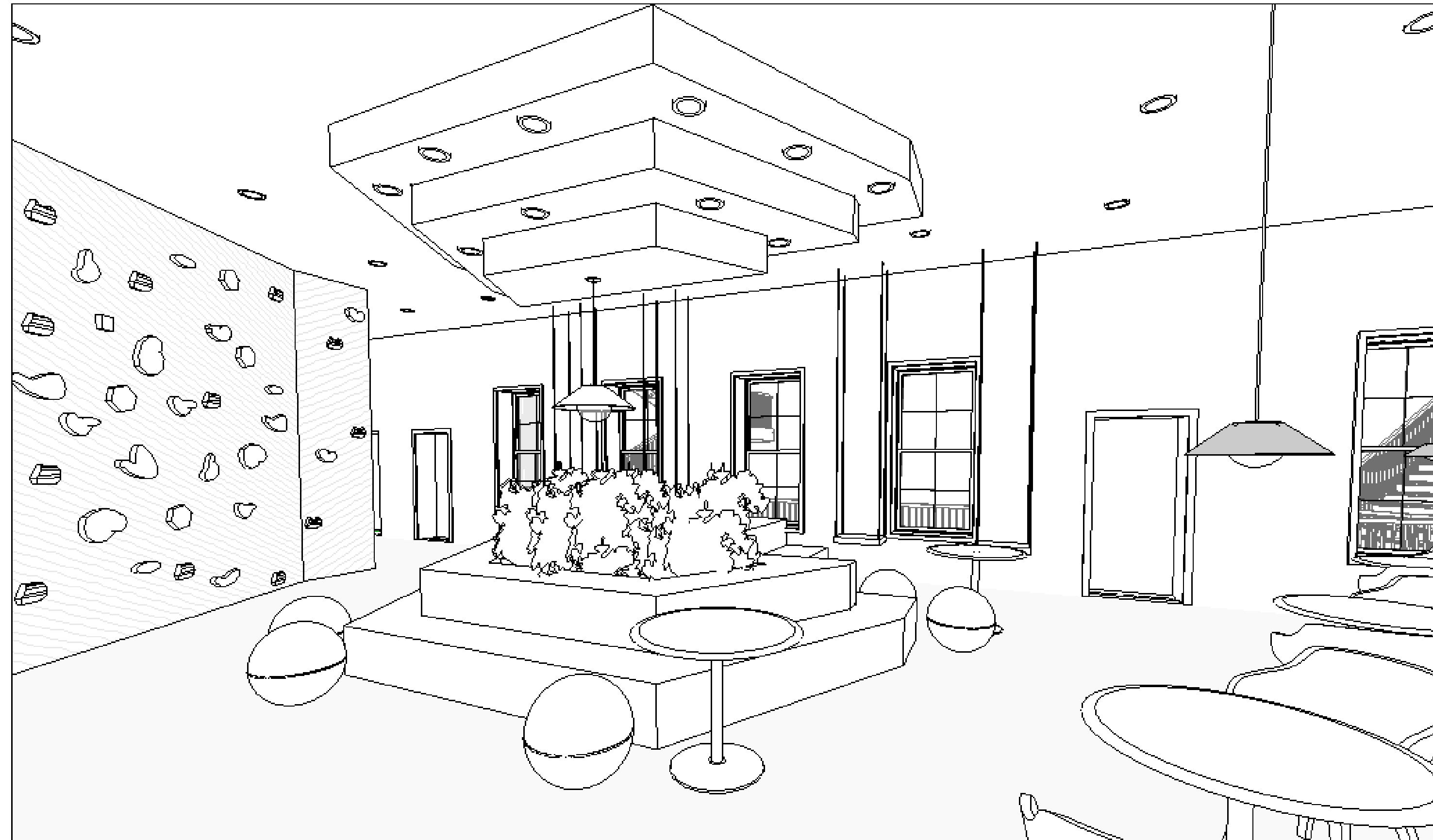
2 Conference Rooms



1 Cafe



4 Private Workspace



3 Lobby



Mattie Overmyer

Email: tovern20@student.scad.edu

Phone: 469.426.9090

Instagram: @mo.originaldesigns

Web: mattieovermyeroriginaldesigns.com

Studio III

patagonia

229 Martin Luther King JR. BLVD
Savannah, GA

Perspectives

Project number Studio III

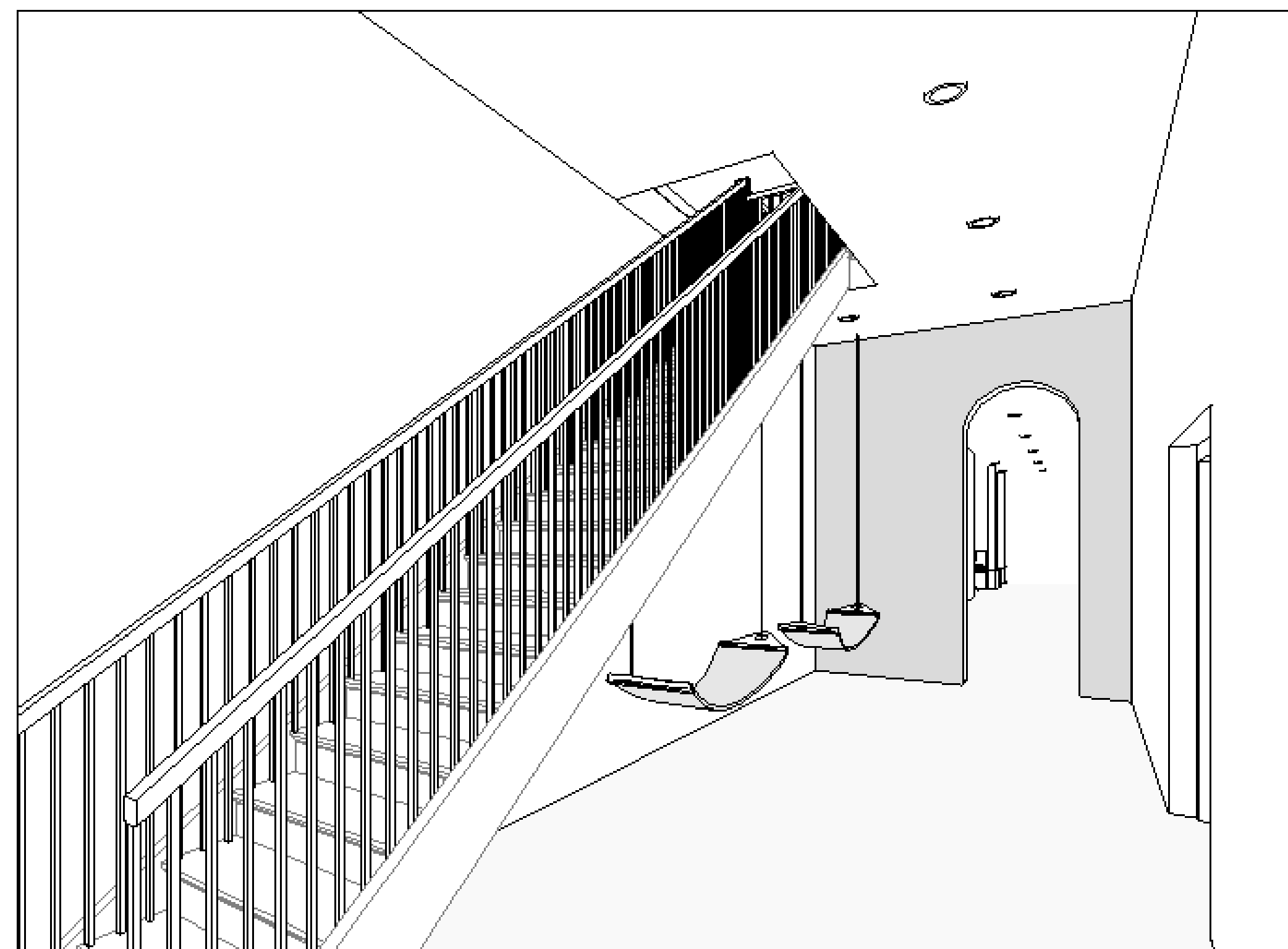
Date February 6, 2019

Drawn by Mattie Overmyer

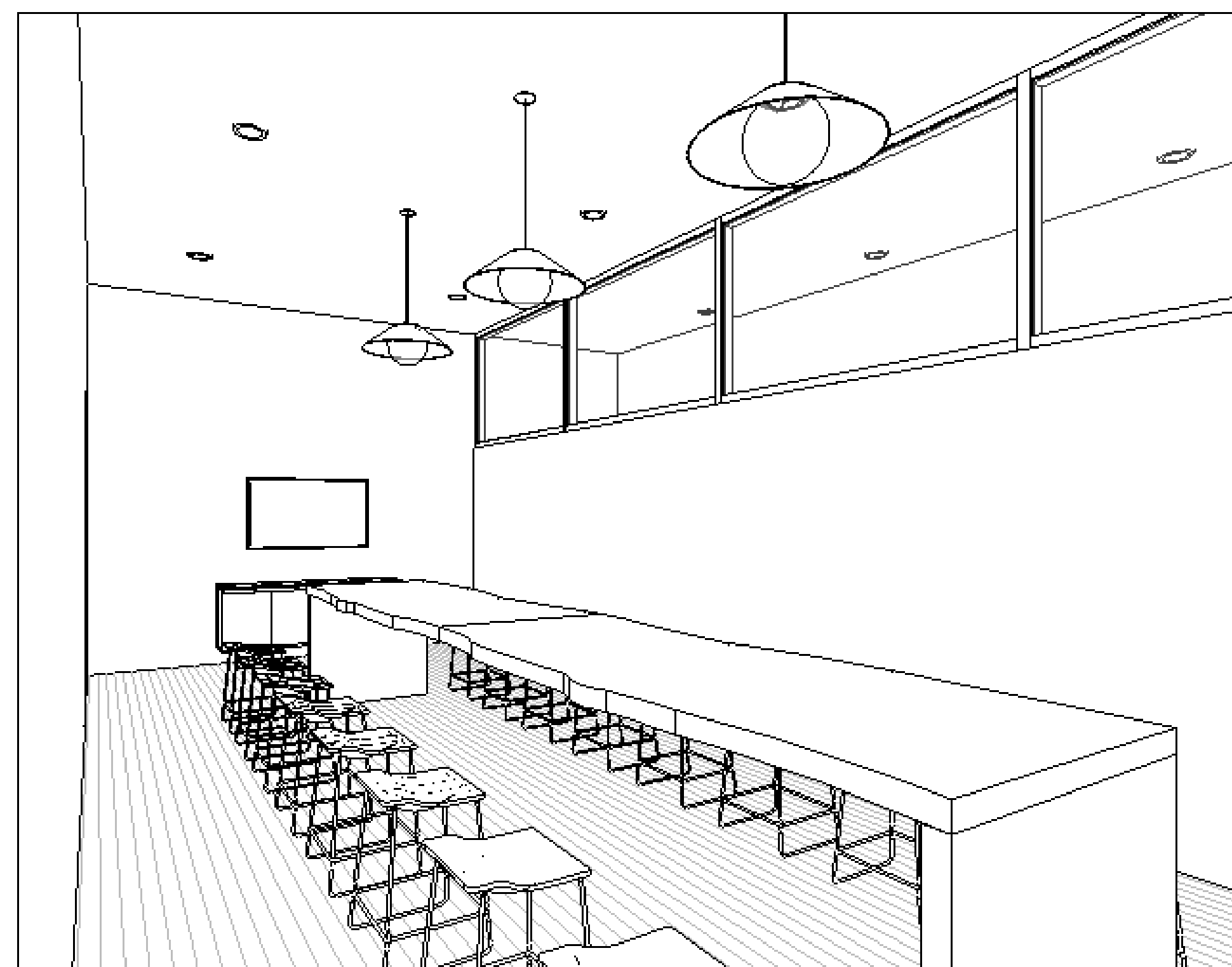
Checked by Alba Marcon

A110.1

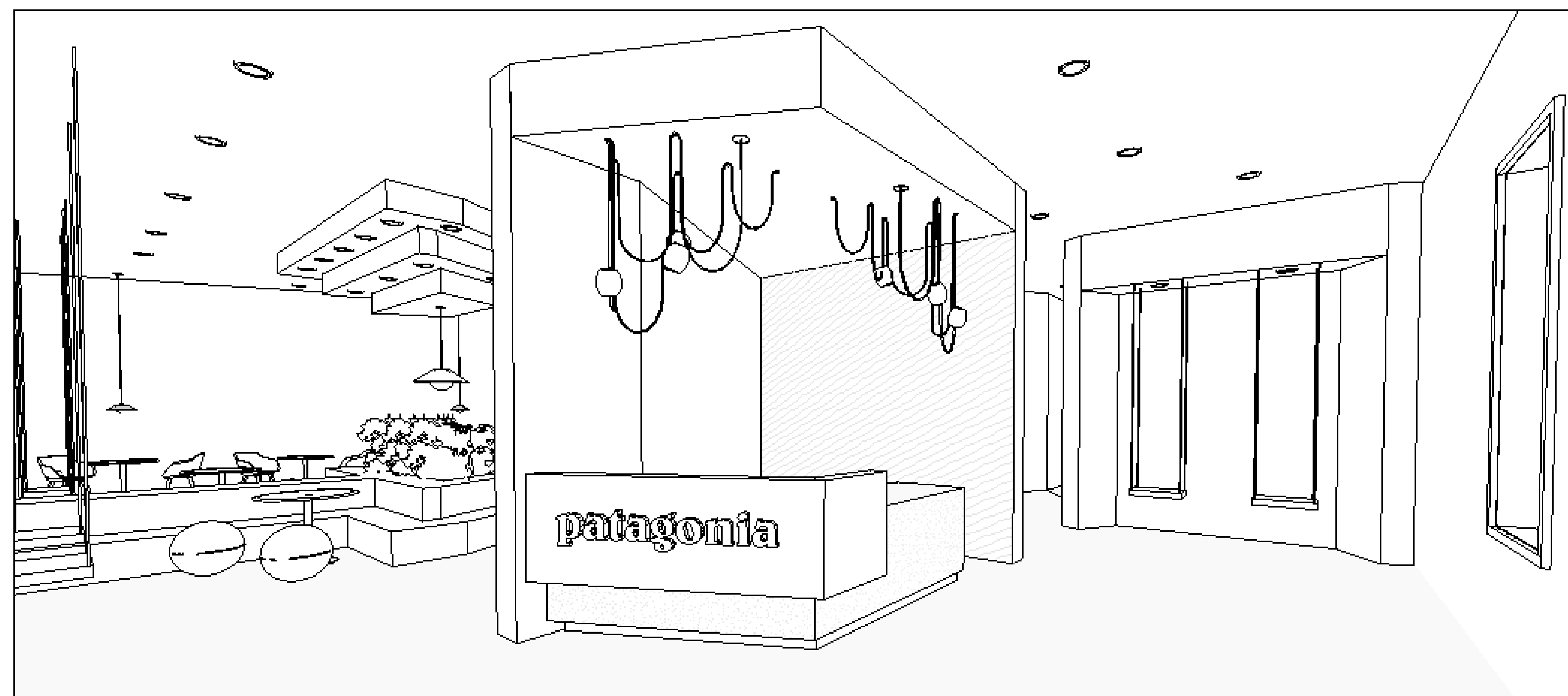
Scale



① Staircase



② Large Conference



④ Reception 2